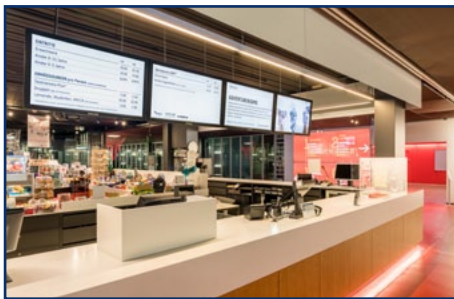


# HTML5 CLIENT

Platform independence with the easescreeen HTML5 Client - flexible entry into Digital Signage

With HTML5, easescreeen is fully compatible with all operating systems and devices, including large/touch displays, monitors, tablets, and smartphones. This gives you full flexibility in implementing Digital Signage - any device, anytime, anywhere!



## NATIVE APPS

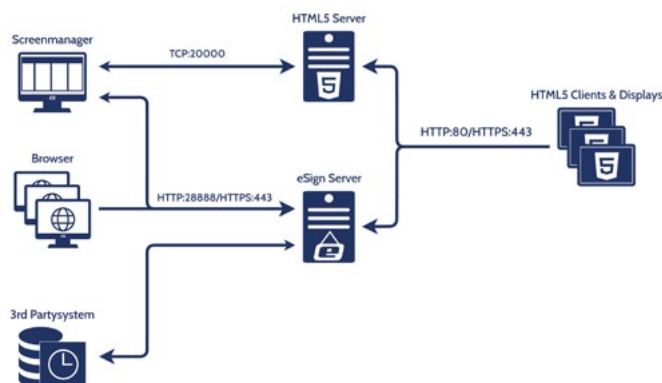
easescreeen is constantly developing the HTML5 Client. We currently support the following manufacturers and models:

- BrightSign
- Hikvision
- iiyama
- Philips
- Qbic
- Sharp / NEC
- Vestel
- elo
- IAdea
- LG
- ProDVX
- Samsung
- Sony
- ViewSonic

For more information about the supported models please visit our Knowledgebase or click [here](#).

## RANGE OF USE

- Restaurants (Menu Board)
- Hotels and receptions (Welcome Board)
- In-store communication



## SOLUTION OVERVIEW

- Available as a „browser app“ that converts content into HTML5, which can then be accessed at any time under a URL.
- Also available as a native app with advanced device control functions such as status query, control of LED lighting elements, etc.
- Particularly suitable for displaying text, images, video, streaming and PDFs
- Integration of real-time content in the form of weather data, social media feeds, stock information, news, websites, event information, etc. possible
- Content can be easily created with the screen manager or web interface and conveniently kept up-to-date.